

Luton Net Zero Roadmap and Action Plan

Progress Report 2024

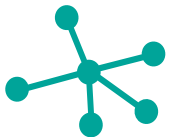


Luton 2040
A place to thrive

Executive Summary

The Progress Report covers key policy and project milestones from the beginning of the Net Zero Roadmap development process in January 2022 until July 2024, which marked the first anniversary of the Roadmap's formal adoption by the Council.

The Progress Report highlights the work and impacts under the key commitments of the "Setting the Foundations" stage of the Luton Net Zero Roadmap. It covers policies and initiatives that have been delivered in the following areas:



1. Strategic decisions



2. Local policies



3. Awareness raising



4. Pilot projects



5. Leadership projects

The report also contains an index of changes to the latest, updated Net Zero Action Plan. The Action Plan with status updates of all actions is appended to the Progress Report.

Luton 2040
A place to thrive

Background

In 2020 Luton Council declared a climate emergency, and started work on establishing Luton's carbon emissions profile. This led to Luton Council developing a Climate Change Action Plan and holding a Climate Change Forum in February 2020.

Further development and delivery of actions had been impacted by the Covid-19 pandemic.

In early 2022 work began anew on refreshing and extending the Climate Change Action Plan to set out the Council's commitment towards helping the town achieve net zero by 2040. A wide stakeholder engagement process and public consultation with dedicated youth survey led to development of a suit of deliverables, referred to hence as the Luton Net Zero Roadmap.

The Roadmap is split into chapters focused on key emissions sources in Luton such as:



The chapter on Biodiversity and Resilience covers the wider impacts of climate change and how the town is adopting to them and supporting nature recovery.

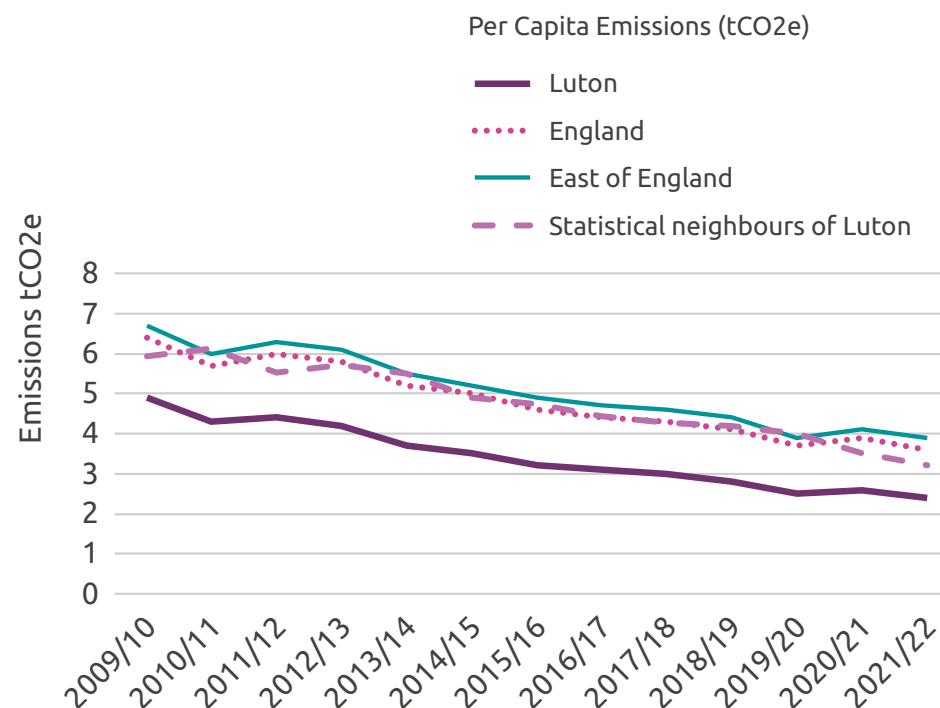
The Roadmap was formally adopted by the Council in July 2023.

Luton's greenhouse gas emissions

The latest government figures show that emissions produced in Luton by sector (homes, buildings, transport and industry) has shown an average reduction of 2.6% per year over the last 17 years (2005-2022).

This fairs favourably in the context of the national picture, especially when considering emissions per capita. In comparison, Luton's per capita emissions had reduced on average by 3.1% per year over the same period, well below national and regional figures.

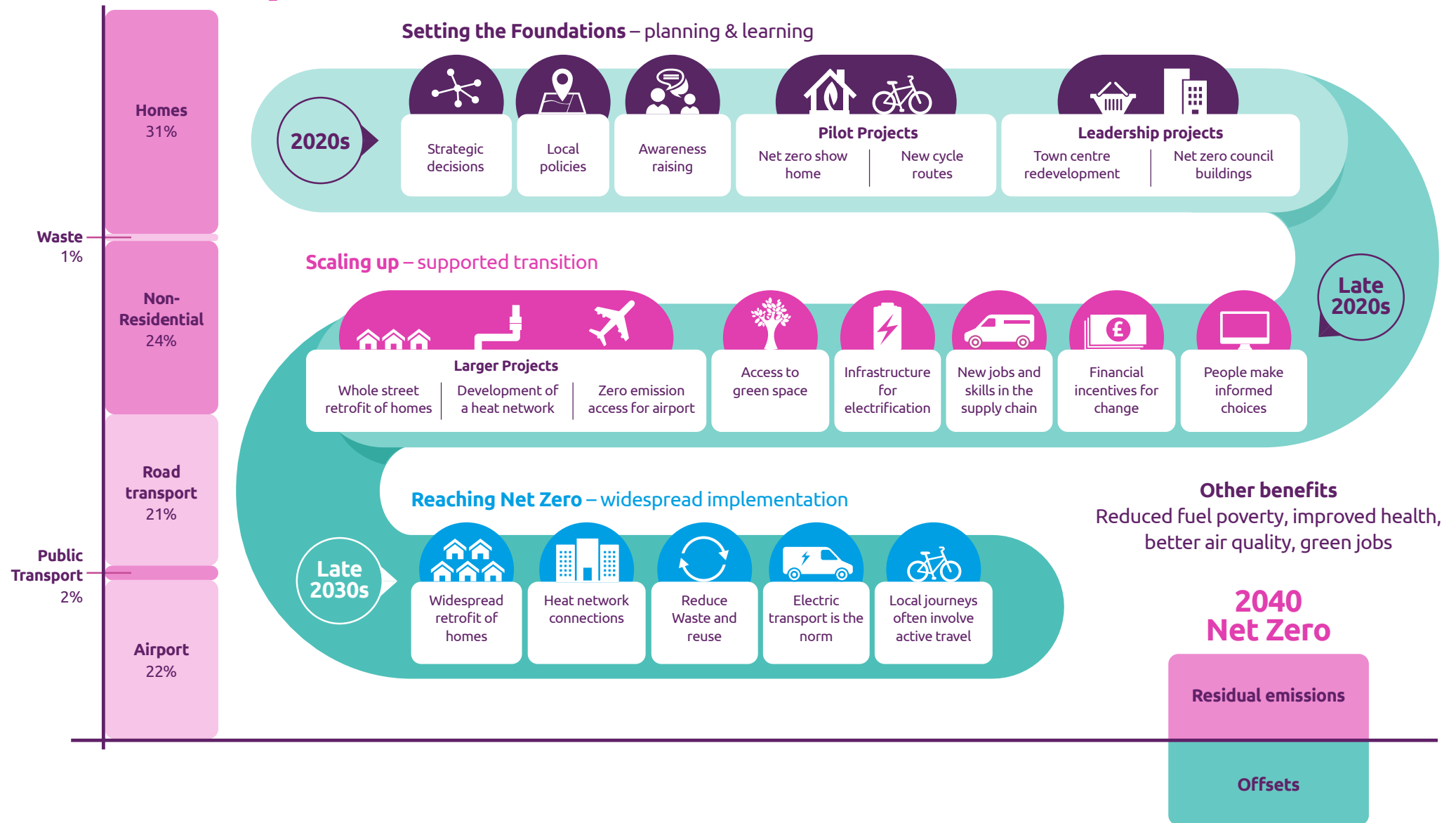
When assessing emissions data, per capita emissions is considered a more reflective data set than total emissions because it accounts for an area's population, offering a clearer sense of the average individual impact on climate change. In comparison to our statistical neighbours (such as for example Bradford, Sandwells, Leicester, Coventry, Peterborough), Luton ranks 1st out 16 Local Authorities' in per capita emissions, meaning our residents' carbon emissions are the lowest.



Luton 2040
A place to thrive

Luton Net Zero Roadmap

2019 - 790 kt CO₂e



Luton Net Zero Roadmap

The Net Zero Roadmap identifies three stages in the journey to achieve net zero by 2040. These stages are:

“Setting the Foundations” – This phase in our Net Zero Roadmap is dedicated to building the essential structures and strategies that will guide us on the path to achieving net zero. At the initial stage, there is focus on defining clear goals, identifying key stakeholders, and securing leadership and governance to drive meaningful climate action.

“Scaling up” – This phase in our Net Zero Roadmap represents a key moment in our net zero journey, where we move beyond foundational strategies and pilot programs to large-scale implementation of climate solutions. At this stage, we are focused on amplifying our efforts across the entire town, driving widespread adoption of sustainable practices, and significantly reducing our carbon footprint.

“Reaching Net Zero” – Arriving at this phase marks the realisation that our long-term vision to eliminate our carbon footprint. Widespread residential and commercial retrofit and energy management will be practised, a meaningful circular economy would be established and a thriving transport approach and infrastructure that promotes EV’s and active travel. This phase reflects our commitment to reducing greenhouse gas emissions across all sectors whilst investing in offset projects to address any remaining emissions.



Luton 2040
A place to thrive

Setting the Foundations Stage- Progress Update

By setting a strong foundation, we are ensuring that our Roadmap to Net Zero is both ambitious and achievable, with the right structures in place to support continuous improvement, innovation, and resilience in the face of climate challenges.



Strategic decisions



Luton 2040. The Vision for Luton is ambitious and bold and strives to create a town where health, equity, fairness and sustainability is at the heart of a thriving area and where poverty is removed.

Luton's vision is built around five priorities, each of which contributes to achieving our overall ambition for the town.

1. Building an inclusive economy that delivers investment to support growth of businesses, jobs and incomes.
2. Improving population wellbeing and tackling health inequalities to enable everyone to have a good quality of life and reach their full potential.

3. Becoming a child friendly town, where children grow up happy, healthy and secure, with a voice that matters and the opportunities they need to thrive.

4. Tackline the climate emergency and becoming a net zero town with sustainable growth and a healthier environment.

5. Supporting a strong and empowered community, built on fairness, local pride and the powerful voice of our residents.

Tackling climate change and creating a more sustainable way of living in the near future, forms an important part of where we want Luton to be by 2040.

Luton 2040
A place to thrive



Strategic decisions

The 2040 Vision has been refreshed in 2023 with five key focus areas for the Net Zero priority for the next five years (2023-28):

- Reduced net carbon emissions from businesses, organisations and households.
- A greener transport network with a reduction in car usage and increase in walking, cycling and sustainable public transport usage.
- The most sustainable airport in the UK.
- Enhanced green space and richer biodiversity that offsets emissions and enriches our local environment.
- Improved air quality across our town to support better health outcomes.

Climate Change Advisory Board

The Climate Change Advisory Board (CCAB) is a cross-party oversight board responsible for monitoring and reporting on the town's transition to net zero in 2040. The board initially set up as a task and finish group has been constituted as an advisory sub-committee of the Executive Committee and in October 2023 co-opted four youth councillors. The importance of having our young people represented within the democratic process is key to our inclusive decision-making and ensuring that the young person's voice is central to our 2040 ambitions. The CCAB reports annually to the Full Council.



Health Equity Town (Marmot Town)

In 2021, as part of Luton's strategic 2040 vision, Luton Council, in their efforts to encourage a health equity approach to improving health and wellbeing in Luton, became a Marmot Place. Since then, Luton have adopted and supported embedding thinking on tackling health inequalities and promoting actions that impact on the building blocks of health.

The council has facilitated and promoted activities that enable its partners to work together across the 8 Marmot principles. In order to support the development of our Marmot Town report, we set up a steering group of partners across the system to obtain buy-in. The work of the steering group contributed to the Reducing Health Inequalities in Luton: A Marmot Town report. The steering group have also coordinated actions across 4 agreed priority areas:

1. Children & Young People – Raising aspirations
2. Housing
3. Business, Employment and Skills
4. Net Zero

The report, Reducing Health Inequalities in Luton: A Marmot Town, is based on an assessment of data and local evidence and makes recommendations to reduce health inequalities and make Luton a fairer place to live, work, grow up and grow old in.



Local Policies

Local Cycling & Walking Infrastructure Plan

As set out in Government's Cycling and Walking Investment Strategy (2017) and Gear Change policy (2020), a Local Cycling and Walking Infrastructure Plan (LCWIP) is a strategic, long-term plan to enhance local cycling and walking networks. The LCWIP (adopted in 2023) identifies improvements to our cycling and walking network over a 10-year period (2023-2033). The plan includes:

- vision and objectives which ensure consideration is given to cycling and walking across the council's planning, transport, environmental, health and greenspace related policy
- a report which sets out the underlying analysis carried out and provides a narrative which supports a holistic approach to identified improvements to the network
- a network plan for cycling and walking which identifies safer and more attractive routes and areas for further development
- a prioritised programme of infrastructure improvements for future investment
- a plan which helps Luton make the case for future funding to improve cycling and walking infrastructure.



EV ChargePoint strategy (2022-25)

The Council released its first ever EV ChargePoint Strategy in November 2022. The strategy helps the borough build on its aims and objectives laid out in the Net Zero Action Plan and Local Transport Plan. With the Council keen to support the transition to EV's, the strategy primarily focuses on the Council's role in increasing the provision of domestic EV charging for residents without driveways and across the Council estate.

Luton Town Centre Desing Guide – SPD

The Town Centre design guide SPD was launched in July 2023. The Guide supports the Luton Town Centre masterplan vision to deliver high-quality housing in the town centre. The Guide promotes the use of LETI Climate Emergency Guide and Easi Guide to Passivhaus Design. It also promotes the policy principles of the RIBA (Royal Institute of British Architects) Climate Challenge 2030, a compelling list of principles for designers to follow to build sustainable homes.



Local Policies

Luton's vision for a town centre is one that:

- meets needs - focused on serving its local community in the best way possible (including housing needs)
- is diversified - embracing the need for big change and adapting well to future challenges (including the introduction of attractive places to live)
- is connected - improving physical and social connections
- is clean and green - with great green spaces and inviting public spaces (including high quality amenity spaces to support residential environments).

Luton Tree Policy and Tree Management Strategy

The Luton Policy and Tree Management Strategy, supported by an action plan, sets out the framework for the sustainable management of trees across the borough of Luton over the next 10 years. The document has been adopted in April 2022.

The Strategy and policies set out the strategic vision - an increasingly healthy, diverse, growing and resilient tree population that enhances the lives of all those living, working and visiting Luton now and for future generations and includes the councils aims to ensure that tree related decisions and activities are made in a structured and consistent way and that Luton residents and stakeholders understand how the council resources the management of its tree stock.



Luton's Employment and Skills Strategy

Luton's Employment and Skills Strategy 2022-27 outlines commitment to establish Green Skills Groups, work with local businesses to understand skills gaps, strengthen partnership with education sector and develop a detailed greens and digital pathway plan.

Integrated Impact Assessment toolkit – Environmental Assessment refresh

January 2023 saw a refresh of Council's internal Integrated Impacts Assessment process. New templates, guidance and training programme had been launched. The Council wants to ensure that all council policies, plans and strategies support our corporate plan and vision for Luton 2040. A particular emphasis is given to environmental considerations of our decision-making process. The Environmental Impact Assessment which is embedded into our Integrated Impact Assessment (IIA) toolkit helps policymakers and project leads to understand and mitigate against environmental impacts throughout the lifecycle of the decision.



Local Policies

In progress

Council Housing Design Brief and Council Housing Net Zero Guide

Following publication of the Town Centre SPD, the Council has launched its own future homes design brief and net zero sustainability guidance. This guidance looks at best practices around energy efficient standards, renewable energy integration, sustainable construction practices, water conservation and building regulation and compliance.

Local Transport Plan 5 – refresh of the existing policy

The latest refresh of the Local Transport Plan is currently underway. Into its fifth iteration, the LTP will now be based on quantifiable carbon reduction and improving health as its main themes. The Plan highlights the importance of travel behaviour around carbon impacts and encourages a more sustainable way to travel in the borough.

Urban Planning and Development – review of the Local Plan

A Local Plan sets out local planning policies and identifies how land is used, determining what will be built where. Adopted local plans provide the framework for development across England.



A refresh of Luton's Local Plan is currently underway, with the Council's strategic objective to be net zero at the cornerstone of the Plan's aspirations to create a more sustainable, positive growth in Luton.

Nature recovery and biodiversity

Work is in progress on Bedfordshire Local Nature Recovery Strategy. Surveys on desired changes and priorities for nature had now been completed. Consultation on the draft Strategy is expected in Spring 2025.

From February 2024 developers are required to conduct a biodiversity assessment at the beginning of the planning process to evaluate existing habitats and species on-site. These assessments quantify the biodiversity value of the site and guide the level of improvement or offset required to meet biodiversity net gain targets.





Awareness Raising

Climate Action Teachers Champions (CATCh) Programme

The Climate Action Teachers Champions Programme is a dedicated support programme aimed at working with local teachers and their schools to unlock their sustainability goals and ambitions. The Programme has received national recognition in 2024, with the Local Government Association (LGA) profiling the project as part of its exemplar education case study's series. In 2023 and 2024 the programme has been completed by 27 schools.

Climate Change Guide

In preparation to reach our commitment of net zero emissions by 2040, we've released our first ever climate change guide in 2022. The guide is aimed at:

- raising awareness of climate change
- helping people to identify their carbon footprint
- helping people to reduce their carbon impact
- key facts and figures in energy conservation and carbon reduction measures.

An electronic copy of the Guide is available to download on the Council website



Over 200 Luton businesses completed Staff Travel Plans by now

Staff travel plans have been developed amongst Luton's largest employers, including the Council, University of Bedfordshire, Luton and Dunstable Hospital, Luton Point businesses and others. Staff travel plans encourage our local employers to support their staff's ambitions to lead a healthier, more sustainable lives. The Council supports the Modeshift STARS certification scheme, where businesses are led through a structured recognition and support process evidencing how their organisations are showing excellence in supporting active and sustainable travel.

Carbon Literacy Training

The Council is currently rolling out a range of Carbon Literacy Training amongst staff and leaders, with Member training being planned for 2025. CLT has offered a chance to work on carbon knowledge, understand the organisation's ambition and to create effective pledges that could shape service delivery going forward.



Awareness Raising

Net Zero Innovation Programme

The Energetic Lifestyles project explored young people's perspectives, in establishing an improved understanding of the perceptions and barriers to energy efficient behaviours among young people and ethnically diverse communities. By doing so, the project has identified ways to enhance engagement of young people in particular in discussing, understanding and disseminating critical approaches to the development and adoption of (new) energy efficient initiatives.

World café Guide

Through the Net Zero Innovation Programme, the Climate Change team had the opportunity to work with academics from University of Bedfordshire, Aston University, London Southbank University, and University College London to explore engagement techniques for research purposes. This work eventually developed into the publication of the World Café Guide, an innovative and effective engagement approach.

An electronic copy of the Guide is available to download from the Council website.



The Strategy Rooms

The Strategy Room is an immersive experience which uses facilitated discussion and social psychology to find out what non-experts really think about climate change policies. It's a way for someone to walk in off the street and within 90-120 minutes, to imagine the benefits of a Net Zero future, and to have their say on how we get there.

Luton was one of eight Authorities that took part in the study. A copy of the study and its findings can be found on the Council's website.

Community Climate Action Guide – coming soon

Emerging Community Climate Action Guide is aiming to bridge the gap between understanding of global climate change and a local action. Community groups and organisations engaged in the Fairness Taskforce process and benefiting from Citizens Funds allocations (managed by the Bedfordshire and Luton Community Foundation) have been given chance to work with council officers and environmental experts to embed climate training and raise awareness on what could be achieved at a local level. Learning had been captured in a dedicated toolkit aimed at local community groups and organisations.



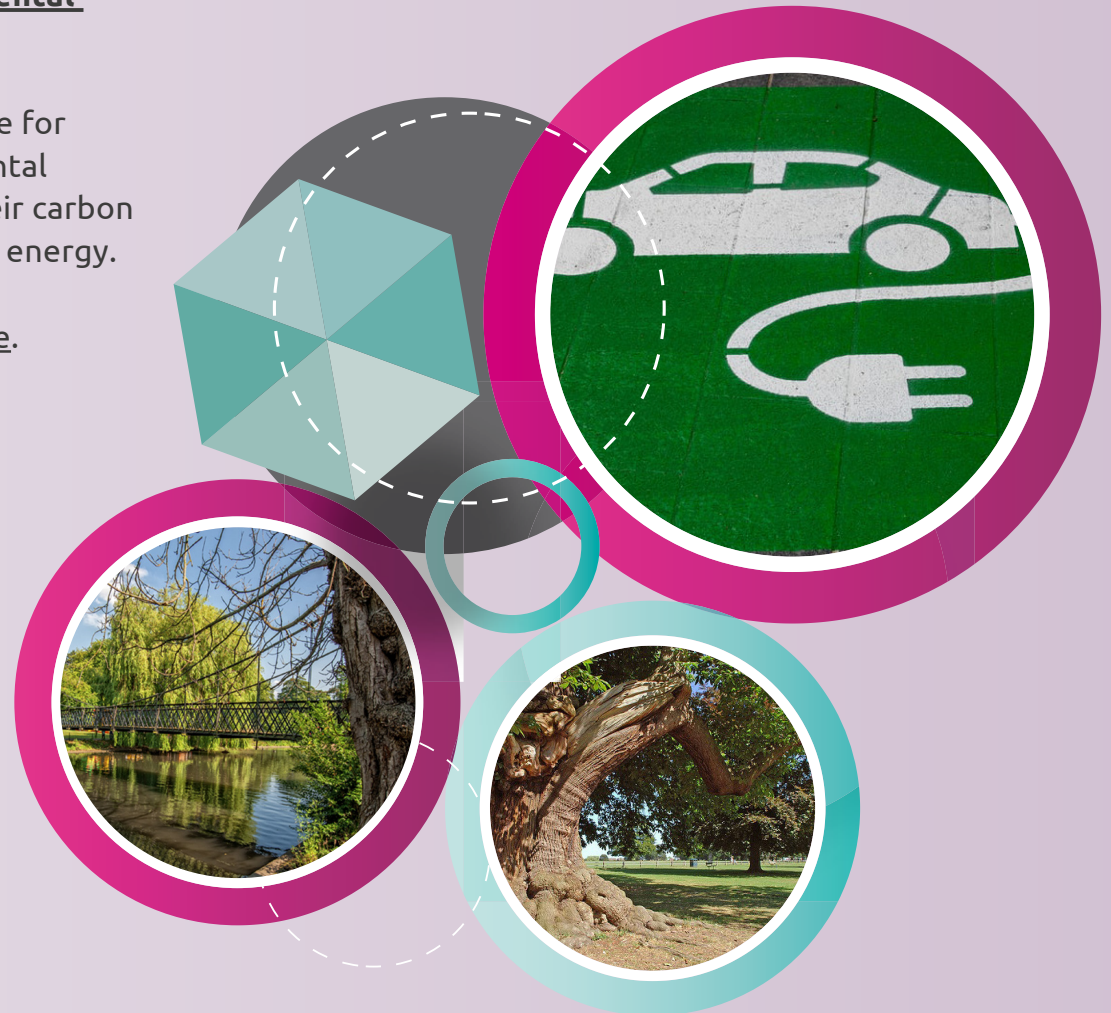
Awareness Raising

Save the Planet Level 1 Qualification in Environmental Awareness

Summer 2024 saw a launch of Luton 4 week challenge for residents to gain a Level 1 qualification in environmental awareness and apply their knowledge to reducing their carbon emissions, eating a more sustainable diets and saving energy.

More details could be found on the [provider's website](#).

LUTON
2040





Pilot Projects

Low carbon retrofit home

The low carbon retrofit home was a partnership project between the Council's Climate Change and Housing teams and Luton Rising. The retrofit project was an exemplar project aimed at showcasing the latest renewable energy and energy efficiency technology in a residential property. The property was open to the public for an 8-week period in late 2023 and attracted more than 200 visitors in that time. The property included measures such as:

- Ground Source heat pumps
- Solar PV
- IoT lighting
- Sensor heating panels
- Smart air warm technology
- Insulation
- Draughtproofing
- Water harvesting

The low carbon retrofit reduced household energy bills by 70% in the home and proved to be a success in showcasing sustainable homes. The project was shortlisted for the 2024 Unlock Net Zero awards.



Sustainable Drainage Scheme (SuDS) in schools

Luton Borough Council's "SuDS in Schools – William Austin Junior School, Luton" was the overall winner of the 2024 Susdrain SuDS Awards. The project was recognised for its use of surface water as a resource, rather than something to be disposed of.

The project included:

- **SuDS planters:** Redirect rainwater from roof downpipes through the soil to promote plant growth
- **Tree pits:** Capture runoff and store it in an underground tank
- **Rainwater harvesting system:** Collects rainwater from the school's roofs to flush toilets

The project's benefits include:

- **Reduced flood risk** - SuDS slow down rainwater flow, which can help alleviate pressure on the drainage system
- **Improved water quality** - SuDS features like permeable paving filter rainwater of pollutants and oil before it returns to a watercourse
- **Benefits for people and wildlife**

SuDS create opportunities for rainwater recycling and attractive water features.

The 'Susdrain SuDS' Awards recognise projects that go above and beyond to encourage and deliver SuDS.



Pilot Projects



Private Sector Housing Energy Campaign

Following the success of a pilot project, which helped landlords and letting agents in understanding their responsibilities under new energy efficiency standards (MEES), the Council's Private Sector Housing team, launched a year-long program funded by Public Health Luton. The initiative continued to provide advice and support to active landlords and letting agents to help them meet their Minimum Energy Efficiency Standards (MEES) obligations. The regulation required Landlords of all privately rented domestic properties to ensure that their premises had an Energy Performance Certificate (EPC) rating of at least Band E before granting a new or renewed tenancy. However, the law changed slightly in April 2022 to include domestic rented properties which must now ensure that their properties had met these requirements.

HACT Carbon retrofit credits scheme

The HACT Carbon retrofit credits scheme is a collaborative initiative designed to support carbon reduction in the UK's social housing sector while promoting social impact. This scheme enables social housing providers to secure funding for energy-efficient retrofitting by generating verified carbon credit, known as "Retrofit Credits", which are then sold to organisations looking to offset their carbon emissions.

Luton Council had been enlisting Council housing properties onto the scheme since it's formal launch at the end of 2022. Funding gained from sales of retrofit credits had been re-invested into further energy efficiency installations.

Making Cycles E-asier (MCE) project and Council staff e-bike scheme

The growing demand for e-bikes has been highlighted through the Council's staff e-bike scheme and the Making Cycles E-asier project. The MCE project is a national level pilot in Luton and Dunstable and aims at offering e-bike rental free to Luton and Dunstable residents for a whole month.

The DART

The Luton DART (Direct Air-Rail Transit) transfers passengers from Luton Airport Parkway station to the terminal of London Luton Airport in under four minutes. The electricly powered DART supports the future sustainable growth of London Luton Airport by reducing environmental impact of journeys to and from the airport and congestion on surrounding roads. It aims to increase rail modal share for passengers accessing the airport and support Luton's vision to become net zero by 2040.

The DART opened on 27 March 2023 and carried more that 2.7 million passangers during the first year of operation. Over the year, the Luton DART has achieved 16.2% modal share for passengers accessing the airport, peaking at 21.6% for week commencing 5 November 2023. This represented an 18% increase on the previous bus transfer service for the same week a year earlier.

Service reliability has exceeded 99 per cent, with no significant downtime other than for safety reasons following the airport car park fire.

The Luton DART service is rated 'excellent' under independent Net Promoter Score (NPS) surveys.

Bus Improvement Service Plan

Following a bid to the government's National Bus Strategy fund the Council was successful in receiving an allocation for its Bus Service Improvement Plan (BSIP). The amount of £19.1 million has been confirmed to support measures over 2 years to March 2025, including:

- lower fares for children and families and those who use a concessionary pass
- development of improved bus priority lanes
- more Red Routes to help priority routes
- more enforcement cameras to help parking services
- development of a Park & Ride facility at Butterfield
- ticketing reforms including cross boundary arrangements.
- extension of time to provide pre-9.30am travel for those using concessionary bus passes.
- better information systems
- later bus services
- working with neighbouring Local Authorities on a Passenger Charter
- working with Bus Operators to ensure better services across Luton for all

Hat Gardens

Luton town centre's first pocket park, Hat Gardens, was officially opened in May 2023 and since then has been the place for people to get together for events or quiet enjoyment. £1.9 million investment transformed derelict land on Bute Street into a community space and opened up 50m of culverted River Lea. The project won Project of the Year at National Building and Construction Awards 2023.



The Stage

Work has begun on a £136M mixed use regeneration project called The Stage providing almost 300 energy efficient homes and a performance venue near the Luton Town train station. The project provides nearly 200 spaces for cycle parking, communal gardens and significant biodiversity net gain.



Net Zero Action Plan update - July 2024

On the first anniversary of adoption, the Net Zero Action plan has been updated to reflect the current progress against our initial actions identified in the Roadmap. Since the initial

inception the action plan had been evolving; some actions have been removed, some updated to better reflect current activities and others added to the plan.

Actions to be added on the Net Zero Action Plan

Priority Area	Headline Action	New Action	Lead
Biodiversity & resilience	Planting project	Protect existing tree canopy in line with the Tree Strategy target to work towards increasing the tree cover by 1 hectare by 2025 (with progress monitored). New requirement to consult about removal of street trees introduced in November 2023 requires additional resource.	Parks team
Biodiversity & resilience	Funding	Investigate additional sources of funding to bring new areas of Conservation Grassland into appropriate management.	Parks team

Actions to be Updated on the Net Zero Action Plan 2024

Priority Area	Headline Action	New Action	Old Action	Lead
Residential	Retrofit homes	Invest in software which collects up to date data on number of homes which have already been retrofitted and identifies those homes which still require retrofit	Set out the level and likely cost of homes retrofits required to meet net zero by 2040.	Housing Strategy
Residential	Retrofit Council-owned homes	Following the stock condition survey, set decarbonisation target date for Council owned homes and identify the first properties to retrofit as trials for heating technologies including considering district heat schemes. Monitor impacts on sample of individual homes.	Following the stock condition survey, set decarbonisation target date for Council owned homes and identify the first properties to retrofit as trials for new fabric improvements and heating technologies including considering district heat schemes. Monitor impacts on sample of individual homes.	BTS

New Builds	New Builds	New housing developers to provide low carbon new homes built to the Future Homes standard/new future standards	New housing developers to provide low carbon new homes built to the Future Homes standard	Housing Strategy
Non-residential	Engagement	Provision of support and advice to local businesses on transition to net zero	Provision of support and advice to local business on transition to net zero, potentially building on support being provided by Wenta and using Luton Heritage Forum	Council Change team
Transport	Modal shift	To assess road user charges and its impacts locally	Road user charging e.g., Implement a workplace parking levy or Clean Air Zone to fund transport improvements	Sustainable Travel team

Transport	Governance	<p>To produce a monitoring and evaluation report that will quantify the impact of Luton's recently implemented TRL UTC system on the environment and provide recommendations specific to Luton around potential improvements including: supporting the shift to active travel; and bus priority.</p>	<p>Implement monitoring mechanisms e.g. Urban Traffic Management Control. Traffic data will be essential in planning and evaluating the effectiveness of AQ and carbon reduction interventions.</p>	Highways team
------------------	------------	--	---	---------------

Waste & Consumer choices	Community Engagement	<p>Explore food business schemes that support healthier menu transformation (including waste minimisation practices).</p> <p>Promote and provide information to the community on local and national resources to help manage food waste.</p> <p>Reviewing local capacity and resources to introduce an appropriate food business scheme.</p>	Community and business partnership initiatives applying waste minimisation and circular economy principles: examples such as collaboration on methods to reduce food waste in hospitality businesses and swap shops and repair cafes	Public Health – Food
-------------------------------------	----------------------	--	--	----------------------

Waste & Consumer choices	Planning	<ul style="list-style-type: none"> • Update and refresh Luton Food Plan: taking on directive from National Food Strategy (2022) and framework from Sustainable Food Places to guide local approach - continue to emphasise connections between public and planetary health. • Explore development of council Corporate Food Policy that would encompass elements of food sourcing and waste management. • Work directly with schools and early years to increase promotion and awareness of links between food choices and planet 	<p>Review the Luton Food Plan and consider developing a Food Strategy, taking on board the Government Food Strategy (2022) and recognising that nutrition and sustainability are interrelated and can no longer be tackled in isolation</p> <p>Promote a more plant-based and low food miles diet within the council culture and work directly with schools</p>	Public Health - Food
-------------------------------------	----------	--	---	----------------------

Biodiversity & resilience	Planting projects	Increase take-up of existing allotment provision	Increase access to allotments and equivalent spaces for growing food.	Parks team
Biodiversity & resilience	Planting projects	Identify resources/budget to increase tree planting across the Borough taking account of “right tree, right place” to contribute to the Tree Strategy target to increase future tree canopy by 1 hectare by 2025 (with progress monitored)	Identify tree planting opportunities across the Borough to work towards increasing the tree cover by 1 hectare by 2025 (with progress monitored).	Parks team
Biodiversity & resilience	Planting projects	Investigate opportunities to increase biodiversity and carbon capture in highway verges and amenity grass land where appropriate	Increasing biodiversity and increase carbon capture in highway verges and grass land where appropriate, with related public information provision about changes.	Parks team

Action Plan Update – July 2024

1. Residential Buildings

No.	Headline Action	Action description	Action Type	Delivery Owners	Start Date	Due Date	Status	Updates (U)/ Changes (C)
A.	Retrofit homes	Invest in software which collects up to date data on number of homes which have already been retrofitted and identifies those homes which still require retrofit	Policy development/ council decision	Climate change team, Housing Strategy team			Not started yet	Change Action point from: Set out the level and likely cost of homes retrofits required to meet net zero by 2040. (C)
		Set targets for % homes retrofits needed per year needed to deliver net zero by 2040 for council, social landlords and private sector homes - to be included in a new Housing Strategy.			2025	2027	In progress	Housing Strategy 26/27 to have clear retrofitting targets (U)
B.	Planning	Review and update the draft Local Plan to ensure policies that promote net zero carbon development and maximise energy and carbon savings, reduce embodied carbon and increase resilience to the effects of climate change	Policy development/ council decision	Luton Council – planning department and climate change team	2024	2027	In progress	Local Plan Review currently being conducted for 2024/25 (U)

Appendix 1

No.	Headline Action	Action description	Action Type	Delivery Owners	Start Date	Due Date	Status	Updates (U)/ Changes (C)
		for all developments are embedded.						
		A 'direction of travel' interim document can provide details of expected future requirements to local trades and property developers.					Not started yet	Could be included in the Retrofit Quantum calculations in the Housing Strategy, but still needs more in-depth data in regard to the Private Housing sector (U)
C.	Green jobs and Skills	Ensure that skills development for housing improvements is integrated within the work of the Employment & Skills Partnership Board and the Employment & Skills Strategy. This could include supporting apprenticeships and a module of an NVQ.	Policy development/ council decision	Luton Council	2022	2027	In progress	Luton's Employment & Skill Strategy (ESS) outlines commitment to establish Green Skills Groups, work with local businesses to understand skills gaps, strengthen partnership with education sector, develop a detailed greens and digital pathway plan (U)

Appendix 1

No.	Headline Action	Action description	Action Type	Delivery Owners	Start Date	Due Date	Status	Updates (U)/ Changes (C)
D.	Planning	Once the Local Plan is reviewed, ensure that there is planning guidance available to developers, households and landlords that clearly explains to them how they can comply with, and go beyond, the requirements on decarbonising buildings	Policy development/ council decision	Luton Council – planning department team	2023	2027	In progress	New Future Homes Standard & Net Zero Guide has been developed (U)
E.	New build	Provision of sufficient resources for communications about and enforcement of new building regulations to ensure maximum compliance	Council led	Luton Council - Housing Strategy	Ongoing	Ongoing	In progress	The Council uses the Luton Developer Forum to promote low carbon building. Currently a lack of enforceable policy in our current local plan but could strengthen this in the next local plan (U)
F.	New build	Publish a new build housing brief to specify the standard required for new council housing.	Policy development/ council decision	Luton Council – Housing Strategy	2023	2024	In progress	Brief is complete and final accessibility checks being done to enable publication on council website (U)
G.	Engagement	Establish landlord licencing including phased energy efficiency improvements with EPC level and carbon reduction	Council led	Luton Council – Private Sector	2022	Ongoing	Not started yet	Awaiting outcome of Judicial Review appeal. Current review of licence and civil penalty levels, to fund additional officers (U)

Appendix 1

No.	Headline Action	Action description	Action Type	Delivery Owners	Start Date	Due Date	Status	Updates (U)/ Changes (C)
		targets for the private rented sector. Ensure sufficient council staff resource to enable enforcement of licences and existing requirements of MEES.		Housing Regulatory				
H.	Retrofit council owned homes	Following the stock condition survey, set decarbonisation target date for Council owned homes and identify the first properties to retrofit as trials for heating technologies including considering district heat schemes. Monitor impacts on sample of individual homes.	Policy development/ council decision	Luton Council Housing / energy department	2028	2033	Not started yet	<p>Update Action point from: following the stock condition survey, set decarbonisation target date for Council owned homes and identify the first properties to retrofit as trials for new fabric improvements and heating technologies including considering district heat schemes. Monitor impacts on sample of individual homes. (C)</p> <p>Latest stock condition surveys indicate investment in new heating technology such as ASHP to be considered in the years 2028-2033. This is because the technology is not cost effective and does not deal with fuel poverty.</p> <p>The delay will allow for cost to reduce as technology becomes</p>

Appendix 1

No.	Headline Action	Action description	Action Type	Delivery Owners	Start Date	Due Date	Status	Updates (U)/ Changes (C)
								<p>more mainstream while at the same time monitoring which way the heating industry is heading.</p> <p>Hydrogen fuel is the other option and if this becomes the main fuel for heating then this will be the preferred option as this will cost less for the infrastructure but also for residents (U)</p>
I.	Carbon literacy, engaging the supply chain	Ensure that residents have access to impartial advice through information campaigns and signposting to existing information, both in the region and nationally.	Partnership project	Cooperation with neighboring boroughs	2024	2025	In progress	Delivering Climate Literacy Action Day (CLAD) in conjunction with CBC (U)
J.	Green jobs and skills	Engage with supply chain of installers to encourage them to reach out to meet new demands. Support local suppliers to develop the required skills for implementing low carbon retrofit, including support in meeting the needs of public sector procurement.	Partnership project	Business & Skills	On-going	On-going	In progress	<p>ESS states:</p> <p>1.5.2 Develop Employment and Skills Supplementary Planning Guidance to support planning submissions from developers 1.6.5 Use the Think Luton Business newsletter to engage employers on activity that can support their skills and recruitment needs 4.3.2 Leverage the Think Luton Business newsletter to promote opportunities to employers (U)</p>

Appendix 1

No.	Headline Action	Action description	Action Type	Delivery Owners	Start Date	Due Date	Status	Updates (U)/ Changes (C)
K.	Engagement / Retrofit	Retrofit zero carbon demonstration / show home(s) (council owned property) to provide real examples of solutions and benefits. Link to communication campaign about technology changes and benefits.	Council led project	Luton Council Housing department/ Climate Change team/ Luton Rising	2023	2024	Completed	First retrofit showhome was open in Nov/Dec 2023. Attracted partners, over 200 visitors and was shortlisted for national award. Digital legacy yet to be finalised. Second showhome under consideration but needs partner funding (U)
L.	Engagement	Encourage sharing of information about carbon reduction through the existing Private Landlords forum	Private Sector Housing	Landlord representatives	On-going	On-going	In progress	Ongoing - Large landlord event planned for early 2025. Carbon reduction slot will be included (U)
M.	Retrofit council owned homes	Implement phases of council and other social housing improvements in energy efficiency, renewable deployment and zero carbon heating	Council led project	Luton Council	On-going	2025/26	In progress	Solar panels and battery storage is being rolled out within our stock. Currently investing approximately £200k per year and set to increase to £300k from year 2025/26 (U)

Appendix 1

No.	Headline Action	Action description	Action Type	Delivery Owners	Start Date	Due Date	Status	Updates (U)/ Changes (C)
N.	Retrofit privately owned homes	Building on existing awareness raising	Requires lead external to council	Partnership between various local councils and the retrofit Supply chain	2022	On-going	In progress	Our work continues on awareness raising from a climate change and energy efficiency perspective. Examples include poster campaigns, community networking, media coverage (U)
		Work with neighbouring local authorities to establish a building retrofit support service and communications campaign about private sector low carbon retrofit. This will support landlords and homeowners in deciding on approaches and applying for grants or other financial incentives.			2022	2024	Completed	Solar Together Scheme Bedfordshire was launched in 2022 in partnership with CBC & BBC. The Scheme saw over 3,000 Solar PV installs over two rounds of the scheme across the region (U)
O.	New build	New housing developers to provide low carbon new homes built to the Future Homes standard/new future standards	Housing Strategy	Foxhall Homes and other developers	N/A	N/A	Not started yet	Update Action from: New housing developers to provide low carbon new homes built to the Future Homes standard (C)

2. Non-residential buildings

No	Headline Action	Action description	Action Type	Delivery Owners	Start Date	Due Date	Status	Updates (U)/ Changes (C)
A.	Council estate	Energy performance monitoring and fabric surveys to provide detailed energy audits of all council buildings. In the context of an overall estate buildings strategy & asset management plan, develop a detailed action plan for improvements including expected capital and lifetime costs, ready for funding opportunities.	Council led project	Luton Council – Estates & other teams	TBC	TBC	Not started	Capacity issues have prevented the development of this area of work (U)
B.	Energy efficiency	Enforce, where possible, minimum efficiency standards for privately rented commercial properties	Council led project	Trading standards	N/A	N/A	Not started	
C.	High standard for new build	Town centre development to provide leadership for change: to meet best practice design standards rather than just current building regulations, and to include the new football stadium development.	Council led project or partnership project	Luton Council	TBC	TBC	Not started yet	

Appendix 1

No	Headline Action	Action description	Action Type	Delivery Owners	Start Date	Due Date	Status	Updates (U)/ Changes (C)
		District heating and shared renewable generation infrastructure should be included and designed for future expansion.						
D.	Planning	Encourage detailed energy audits of business and public sector buildings	Enabling activity by council and others	Luton Council – Corporate Energy/ Business Team/ Commercial landlords	2024	2025	In progress	Joint programme being delivered in partnership with University of Bedfordshire (UoB), where specialist range of assistance will be targeted at micro and small enterprises in the borough (U)
E.	School buildings	Energy performance monitoring and fabric surveys to provide detailed energy audits of all schools. Develop a detailed action plan for improvements including expected capital and lifetime costs, ready for funding opportunities	Council led project	Luton Council – Estates Management and climate change teams	On-going	On-going	In Progress	Fabric surveys carried out as part of CIPFA but energy assessments to be completed (U)
F.	Council estate	Develop a funding strategy based on the needs of the estate buildings action plan, including	Council led project	Luton Council – Estates & Energy Management	On-going	On-going	In progress	Early stages of development (U)

Appendix 1

No	Headline Action	Action description	Action Type	Delivery Owners	Start Date	Due Date	Status	Updates (U)/ Changes (C)
		consideration of innovative funding mechanisms		nt teams, Finance department				
G.	Council estate	Review the Capital Strategy and capital processes to take account of social benefits/ESG in impacts assessments. For example, to allow for longer term payback on building improvements to enable new technologies to be implemented.	Policy development/ council decision	Luton Council – Finance, Procurement and Estates teams	On-going	On-going	In progress	Requests for capital funding need to include an explanation of the wider costs and benefits to the public including economic, social, environmental and health benefits (U)
H.	Planning	Review and update the Local Plan to require high standards of energy performance and low carbon heat for new build and refurbishment of commercial properties based on best practice such as LETI Climate Emergency Design Guide and BREEAM 2018	Policy development/ council decision	Luton Council – planning department and climate change team	On-going	On-going	In progress	An issues and options paper has been drafted, setting out what we think are the key issues and options for preparing the new local plan. This is the first stage in the plan preparation process. The paper includes a section on climate change and refers to new policies potentially including requirements for sustainable buildings (e.g. BREEAM) and on retrofitting standards. It also includes questions on whether we should set energy efficiency standards over and above current and anticipated building regulations,

Appendix 1

No	Headline Action	Action description	Action Type	Delivery Owners	Start Date	Due Date	Status	Updates (U)/ Changes (C)
								<p>and whether we should encourage the decarbonisation of energy supply.</p> <p>The issues paper is planned to go out to public consultation in November this year (2024) subject to authorisation from the Executive.</p> <p>Responses received through public consultation will help shape draft policies in a new local plan (U)</p>
I.	Engage ment	Establish a Luton climate change partnership to co-ordinate regular energy and climate change related collaboration between business and public sector organisations to share best practice and enable joined up action.	Enabling activity by council and others	Luton Council Climate change team with a partnership established to own it, potentially led by University of Bedfordshire	On-going	On-going	In progress	Currently a range of focus groups have been conducted with the University of Bedfordshire leading on the research and developing key findings from discussions (U)
J.	Heat networks	Develop more detailed heat network plan (based on existing heat mapping work and town centre master plan). Require	Enabling activity by council	Luton Council	On-going	On-going	In progress	Funding application submitted for updated feasibility study – awaiting results (U)

Appendix 1

No	Headline Action	Action description	Action Type	Delivery Owners	Start Date	Due Date	Status	Updates (U)/ Changes (C)
		connections for new developments through planning. Also scope out renewable energy planning related to new developments	and others					
K.	Energy planning	Collaboration with UK Power Networks regarding power network to ensure sufficient capacity and connections for new developments and existing buildings	Enabling activity by council and others	Luton Council	2025	On-going	Not started yet	
L.	Engage ment	Provision of support and advice to local businesses on transition to net zero	Council led project	Luton Council Business support and climate change team	On-going	On-going	In progress	Change Action point from: Provision of support and advice to local business on transition to net zero, potentially building on support being provided by Wenta and using Luton Heritage Forum (C)
M.	Council estate and schools	Implementation of urgent and priority audit recommendations to move towards net zero in the council buildings and schools. Monitor impacts.	Council led project	Luton Council – Estates & Energy Management teams	On-going	On-going	In progress	Public Sector Decarbonisation funding acquired, also further support provided through the CATCH educational programme, that works directly with schools in developing a Climate Change Action Plan for the school and its site (U)

Appendix 1

No	Headline Action	Action description	Action Type	Delivery Owners	Start Date	Due Date	Status	Updates (U)/ Changes (C)
N.	Building retrofits	Encourage business and public sector property owners to invest in retrofit to reduce fossil fuel use, improve energy efficiency and increase renewable generation across multiple projects	Needs leads external to council	Businesses and public sector property owners	2024	2025	In progress	The Partnership programme as per Action 2.D(i) run in conjunction with UoB (U)

3. Transport and active travel

No.	Headline Action	Action description	Action Type	Delivery Owners	Start Date	Due Date	Status	Updates (U) / Changes (C)
A	Infra-structure changes	Through procurement policy (see governance action plan) ensure that choice of road materials are lowest carbon for future projects	Council led project	Luton Council	On-going	On-going	In-progress	Regular discussion to drive innovation through highways contract management boards (U)
B	Modal shift - Active travel	Campaign for a car free day and promote behaviour change with businesses and residents	Enabling activity by council and others	Luton Council	On-going	On-going	In progress	We have implemented sustainable travel events to coincide with Travelwise week 16 to 22 September 2024 (U) https://modeshift.org.uk/travelwise-week/

Appendix 1

C	Behaviour Change	Provide support for car clubs and lift sharing schemes through engagement with local schools and businesses	Enabling activity by council and others	Luton Council	On-going	On-going	In progress	The council has created a free lift sharing page sharing page on Mobility ways website (U) https://hub.liftshare.com/regional/bedfordshire
D	Modal shift – Active travel	Work with schools, colleges and large employers to develop travel plans which decrease use of the car and increase walking and cycling	Partnership project	Luton Council	On-going	On-going	In progress	Continuous support given to businesses to develop both conditional and voluntary accredited Sustainable Travel Plans. This is currently implemented through continuous 1-to-1 catch-ups and a six weekly travel plan forum (U)
E	Modal shift – Active travel	Develop targets and an action plan for optimizing mileage for Council business travel through travel planning	Policy development	Luton Council	N/A	N/A	Not started	Action to be removed (C)
F	Infrastructure changes – Active Travel	Promote cycling and walking in Luton through network improvements to create safe cycling and walking routes ¹ . <ul style="list-style-type: none"> Wider cycle lanes / segregated cycle tracks Controlled crossing points for cyclists 	Council led project	Luton Council	2022	On-going	In progress	LCWIP adopted in 2022. Highways team developing a scheme for route C of the LCWIP (Legrave station to Poynters Road) and we have successfully been awarded funding from ATE to develop Route F of the LCWIP (New Bedford Road / Barton Road) (U)

¹ Underpinned by the Draft Local Cycling and Walking Infrastructure Plan

Appendix 1

		<ul style="list-style-type: none"> • 'Active travel friendly' junction improvements • Creation of 'quiet ways' 						
G	Electric Vehicles	Work with private sector partners to deliver EV charging infrastructure across the council estate for both council and public charging	Partnership project	Luton Council	On-going	On-going	In progress	Continue to provide advice and support to the private sector as appropriate (U)
H	Electric Vehicles	The Council will undertake a fleet review, to identify a preferred pathway to electrify its vehicle fleet and inform a procurement strategy based on whole life costs	Council led project	Luton Council	On-going	On-going	In progress	Trials have taken place with low level RCV's such as roadsweepers (U)
I	Other	All major residential and commercial planning applications to include a Travel Plan in line with current best practice and to ensure buses provided with the infrastructure needed to serve new developments	Policy development	Luton Council	On-going	On-going	In progress	To be considered for the Local Plan Review
J	Rail	Improved connection between National Rail	External project to	Luton Airport	On-going	On-going	In progress	The Luton DART was opened on the 10 th March 2023

Appendix 1

		and Luton Airport on delivery of DART	the council					Continuing to work with the airport through the Development Consent Order process and P-19 application to strengthened rail connectivity to Luton Airport (U)
K	Modal shift – Active travel	<p>Supportive measures to encourage modal shift to active travel, and monitor impacts.</p> <ul style="list-style-type: none"> • Cycle training, • Cycle hire schemes • Cycle recycling scheme • Community cycle clubs • Low Traffic Neighbourhoods • Driver awareness training and marketing and promotion. 	Council led project	Luton Council	On-going	On-going	In Progress	<p>Bikeability (cycle training) currently offered to Luton schools. Children without their own bike can organise one for free from the council, to partake in the training. E-cycle hire scheme currently running from Inspire.</p> <p>No progress on Low Traffic Neighbourhoods due to previous government administration but will be considered as part of LTP5.</p> <p>We work with schools on road safety and use modeshift stars for safer trips to school and are part of the Bedfordshire Road Safety Partnership with the Police, Fire Services and LAs representing Bedfordshire (U)</p>
L	Electric Vehicles	The Council will undertake a hackney/PHV fleet review and work with operators to develop a pathway that increases	Council led project	Luton Council	On-going	On-going	In progress	Policy update provided to run in conjunction with the Council's Hackney Carriage and Private Hire Policy 2018 to identify requirements under Low and Zero Emissions Vehicles (U)

Appendix 1

		EV uptake for these vehicles						https://www.luton.gov.uk/Business/Lists/LutonDocuments/PDF/Licensing/zero-emissions-addendum.pdf
M	Rail	Complete electrification of passenger rail through Luton	External project to the council	Network Rail	On-going	On-going	In progress	Rail network electrified as far as Kettering. The council continues to work with sub-national transport bodies and Network rail to see line speed improvement projects realised by upgrading overhead line equipment through Luton (U)
N	Rail	Completion of Access for All Works at Luton (Town) and Leagrave to allow those with mobility challenges to use the railway locally	External project to the council	Network Rail	On-going	On-going	In progress	Work is progressing to secure the funding to replace the station canopies on platforms and the installation of a new bridge and three lifts to improve Luton station's accessibility, construction is due to start in 2025. Leagrave station has now been included in the DfT's Access for All programme (U)
O	Modal shift – Active travel	Implement School Streets ² (traffic exclusion zones) for schools in Luton and Play Streets ³ to restrict traffic movements at peak times and encourage shift to active travel.	Partnership project	Luton Council	On-going	On-going	In progress	School street (traffic exclusion zone) currently operational on Denbigh Road (serving Denbigh Primary School). There is currently a programme of other schools the council intends to work with to implement these schemes (U)

² A School Street is a road outside a school with a temporary restriction on motorised traffic at school drop-off and pick-up times. The restriction applies to school traffic and through traffic.

³ Playing out on your street <https://www.bristol.gov.uk/streets-travel/playing-out>

Appendix 1

P	Electric Vehicles	To support residential EV charging and to develop the on-street EV charging network, the Council will create a dedicated e-form so residents can suggest new locations for EV charge points	Council led project	Luton Council	On-going	On-going	In progress	The e-form is active on the website (U) https://myforms.luton.gov.uk/service/Chargepoint_suggestions
Q	Rail	Return of EMR Intercity services to Luton Airport Parkway, encouraging those who live north of Corby to take public transport to the Airport	External project to the council	Great British Railways	2021	On-going	In progress	Since the 2021 timetable change for EMR services, the council continues to work with sub-national transport body Network Rail to reinstate direct services to call at the airport from the north without the need for change at Kettering (U)
R	Alternative fuels	Interim action for diesel vans and HGVs in Council Fleet to be run on biofuels	Council led project	Luton Council	2022	2023	Completed	The Council's fleet has converted to gas-to-liquid biofuel and subsequently to HVO (U)
S	Electric Vehicles	Widespread EV infrastructure across the council estate for both council and public charging, starting with a phased roll-out of EV charge points at key council housing carparks	Council led project	Luton Council	On-going	On-going	In progress	A contract to install chargepoints to serve the six key council housing sites identified by the Housing Team has been awarded to BeliEV. An initial site survey to identify specific hardware and bay designs has been completed with Believ and the council.

Appendix 1

								Once the terms and conditions for the contract have been agreed a full site survey will be carried out (U).
T	Electric Vehicles	The Council will, subject to viability, commit to delivering multiple fast, rapid or ultra-rapid charging points at its fleet depot to accelerate a phased transition towards EV use	Council led project	Luton Council	N/A	N/A	Not started yet	Feasibility has already taken place to identify if grid capacity can accommodate rapid charging facilities at the depot. Costs and capacity are restricting (U)
U	Modal shift	To assess road user charges and its impacts locally	Council led project	Luton Council	N/A	N/A	Not started yet	Updated Action from: Road user charging e.g., Implement a workplace parking levy or Clean Air Zone to fund transport improvements (C)
V	Electric Vehicles	EV infrastructure at taxi ranks for drivers across Luton e.g. locations for exclusive 'taxi only' recharging points	Enabling activity by council and others	Luton Council	2022	2024	Completed	Four rapid chargepoints for Taxi and PHV drivers have been installed at locations across the town. Following a new host agreement, BP Pulse are fully liable for these chargepoints (U)
W	Infrastructure changes	LED traffic signal infrastructure	Council led project	Luton Council	2019	2023	Completed	Luton's traffic signal and streetlighting LED coverage is now at 98% (U)
Y	Public transport	Engage with and promote travel schemes and discounted tickets e.g. Arriva discounted	Partnership project	Luton Council	On-going	On-going	In progress	As part of BSIP we have an approved statutory enhanced partnership, EP with bus service operators that includes offering

Appendix 1

		tickets for organisations participating in a travel club, including bus fares for 17–21 year old at 70% of the adult fare, 16 and under at 50%						discounted Hip Hop tickets (£10 for children and £13 for adults) compared to fares of up to £19 per week. We have undertaken two marketing events in May and September 2024 to promote discounted fares, extended routes and sustainable travel (U)
Z	Public Transport	Deliver bus priority measures: <ul style="list-style-type: none"> • strategic bus lanes on key routes (3km new bus lanes) • improved access for buses to the town centre • Traffic signalling priorities for buses 	Council led project	Luton Council	On-going	On-going	In progress	The Council's BSIP for Luton has seen the town awarded £19m in funding to cover bus priority infrastructure, bus service support, marketing and zero emission buses (U)
AA	Public Transport	Work with the university to investigate how the various campus locations and halls could be connected by public transport	Partnership project	Luton Council	N/A	N/A	Not started yet	Though discussions with UoB have yet to start, similar agreements have been developed with local schools such as Queen Elizabeth High School.
AB	Public Transport	Improve the experience of travelling by public transport and communicate this to residents through a marketing campaign	Council led project	Luton Council	On-going	On-going	In progress	Working with local bus operators, a leaflet campaign has been started, two public events have been conducted throughout 2024 (May & September), work with L&D Hospital to develop their bus

Appendix 1

		<ul style="list-style-type: none"> Improved waiting facilities, Improved on board experience, Better ticketing, Cycle storage at mobility hubs <p>Employ several Bus Ambassadors</p>						timetable information system, which displays real time data and passenger information (U)
AC	Efficiency	Implement a local delivery hub to maximise the efficiency of deliveries / enable green 'last mile' services.	Partnership project	Luton Council			Not started yet	
AD	Other	Include zero (or low) emissions policy in taxi licensing, phased approach until 2040	Policy development	Luton Council	On-going	On-going	In progress	<p>Policy addendum associated to low and zero emissions policy underpinned by the Hackney carriage and private Hire Policy (U)</p> <p>https://www.luton.gov.uk/Business/Lists/LutonDocuments/PDF/Licensing/zero-emissions-addendum.pdf</p>
AE	Public Transport	Design and develop Park and Ride (Travel Hub) site	Council led project	Luton Council	On-going	On-going	In progress	Butterfields site is looking to open in June 2025 (U)
AF	Rail	Maximise local and regional rail connectivity to Luton, from London, the Midlands and	Partnership project	Luton Council	On-going	On-going	In progress	The council officers continue to work with sub-national transport body England's Economic Heartland (EEH) to promote local rail interests in Luton. Objectives

Appendix 1

		through interchange with East West Rail						and priorities for the rail network are being identified through the EEH mainline priorities report (U)
AG	Public Transport	Ensure that London Luton Airport has a world class Sustainable Travel plan and outstanding bus connections with Luton and beyond. Hold airport to account on target of 45% surface access by public transport.	Council led project	Luton Council	On-going	On-going	In progress	LLA Responsible Business Strategy was updated in 2023 and is underpinned by their Sustainability Report. Launch of the electrified DART and the launch of the airports Greener Future fund, which has donated over £0.5m in community investment including sustainability (U) https://www.london-luton.co.uk/corporate/sustainability/reports-and-performance
AH	Public Transport	Transition bus fleet to electric - introduce electric buses on the Luton Dunstable Busway network; and work towards Euro 6 by retrofitting existing fleet, all buses entering town centre to be zero or low emissions	Council led project	Luton Council	On-going	On-going	In progress	All bus operators are providing Euro 6 regulations. Feasibility is still being conducted by Operator's to determine the feasibility of EV buses in the town. Currently restrictions with logistics, grid capacity and costs (U)
AI	Electric Vehicles	Luton council suppliers' fleet to be EV (set target years for cars and vans). Include zero carbon	Council led project	Luton Council	N/A	N/A	Not started yet	

Appendix 1

		vehicle requirements in all service delivery contracts						
AJ	Pedestrian isation	Enforce pedestrianisation of key areas such as High Town and Bury Park high Street. Extend vehicle free spaces across Luton town centre.	Planning	Luton Council	On-going	On-going	In progress	LCWIP was launched in 2023, looking at local footpath and cycling access routes across the town (U) https://m.luton.gov.uk/Page/Show/Transport and streets/sustainable-travel/Pages/local-cycling-and-walking-infrastructure-plan-consultation.aspx
AK	Rail	East West Rail complete between Bedford and Cambridge	External project to the council	Department for Transport	On-going	On-going	In progress	In May 2023 there was a preferred route announcement by DfT between Bedford and Cambridge. There originally planned to be a statutory consultation on the route in 2024. Scheme is being reviewed as part of the government's transport infrastructure review (U)
AL	Governance	To produce a monitoring and evaluation report that will quantify the impact of Luton's recently implemented TRL UTC system on the environment and provide recommendations specific to Luton around potential improvements including: supporting the	Council led project	Luton Council	N/A	N/A	Not started yet	Update to Action Point from: Implement monitoring mechanisms e.g. Urban Traffic Management Control. Traffic data will be essential in planning and evaluating the effectiveness of AQ and carbon reduction interventions. (C)

Appendix 1

		shift to active travel; and bus priority.						
AM	Governance	Establish a formal partnership with bus operators	Partnership project	Luton Council		2023	Completed	Enhance Partnership in place with bus operators since 2023.
AN	Governance	Incorporate place-based approach that accelerates the transition to a zero-emission road transport system for journeys that can't otherwise be made by active travel into the Local Plan	Council led project	Luton Council	On-going	On-going	In progress	Council officers representing transport policy/strategy functions have fed into the emerging Local Plan. Further, work on the emerging Local Transport Plan 5 has included planning policy colleagues in the officer working group (U)

4. Luton Airport

London Luton Airport sustainability and net zero progress reporting could be found here:

<https://www.london-luton.co.uk/corporate/sustainability/reports-and-performance>

Luton Rising's sustainability and net zero strategies from Feb 2022 could be found here:

<https://lutonrising.org.uk/wp-content/uploads/2024/06/Sustainability-Strategy-2.pdf>

<https://lutonrising.org.uk/wp-content/uploads/2024/06/Net-Zero-Strategy-2.pdf>

A review of the sustainability strategy and a delivery plan is expected in 2025.

5. Waste and consumer choices

	Headline Action	Action description	Action Type	Delivery Owners	Start Date	Due Date	Status	Updates (U)/ Changes (C)
A	Community engagement	Public awareness campaign on waste prevention through changing patterns of consumption and its connection to climate change e.g. Edible High Town program to educate on composting	Council led project	Luton Council – waste team, communications team, community organisations	On-going	On-going	In progress	
B	Planning	Work with the waste contractor and the public to improve policy enforcement to reduce waste contamination and extra waste, including awareness raising and feedback to the public and landlords	Council led project	Luton Council – waste team	On-going	On-going	In progress	New waste contract started in Oct 2024. Progress update will be reported in 2025 (U)
C	Planning	Compliance with national legislation to provide separate food waste collection by 2025 for residential and schools waste. Explore the impact this has on	Council led - regulatory	Luton Council – waste team	On-going	On-going	In progress	

Appendix 1

	Headline Action	Action description	Action Type	Delivery Owners	Start Date	Due Date	Status	Updates (U)/ Changes (C)
		carbon emissions and develop measures to mitigate this.						
D	Planning	Review and procure waste disposal contract to incentivise waste reduction and increase recycling rates, including carbon metrics across the waste streams	Council led	Luton Council – waste team, procurement	2022	2024	Completed	New contract awarded. Delivery by Suez started in Oct 2024.
E	Community Engagement	Explore food business schemes that support healthier menu transformation (including waste minimisation practices).	Partnership project	Luton Council – Public Health	On-going	On-going	In progress	Updated Action: Community and business partnership initiatives applying waste minimisation and circular economy principles: examples such as collaboration on methods to reduce food waste in hospitality businesses and swap shops and repair cafes (C)
		Promote and provide information to the community on local and national resources to help manage food waste.	Council led	Luton Council – Public Health	On-going	On-going	In progress	Working with Luton Supporting You/Food First to maintain presence in community and develop different resources (e.g. menu planner); #HealthyLuton communications campaign has also included posts on food waste. (U)

Appendix 1

	Headline Action	Action description	Action Type	Delivery Owners	Start Date	Due Date	Status	Updates (U)/ Changes (C)
		Reviewing local capacity and resources to introduce an appropriate food business scheme.	Council led	Luton Council – Public Health			Not started yet	
F	Planning	Update and refresh Luton Food Plan: taking on directive from National Food Strategy (2022) and framework from Sustainable Food Places to guide local approach - continue to emphasise connections between public and planetary health.	Partnership project	Luton Council – Public Health	On-going	On-going	In progress	i Updated Action from: Review the Luton Food Plan and consider developing a Food Strategy, taking on board the Government Food Strategy (2022) and recognising that nutrition and sustainability are interrelated and can no longer be tackled in isolation(C)
		Explore development of council Corporate Food Policy that would encompass elements of food sourcing and waste management.		Luton Council – Public Health	On-going	On-going	In progress	Working towards applying for Bronze Sustainable Food Place Award in 2025 (U)

Appendix 1

	Headline Action	Action description	Action Type	Delivery Owners	Start Date	Due Date	Status	Updates (U)/ Changes (C)
		Work directly with schools and early years to increase promotion and awareness of links between food choices and planet						Promote a more plant-based and low food miles diet within the council culture and work directly with schools " . " (C)
G	Retrofit	Installation of carbon capture and storage technology to all energy from waste plants. To be made a requirement for future waste contracts.	Council led	Council waste team				Not applicable at the present.

6. Biodiversity and resilience

	Headline Action	Action description	Action Type	Delivery Owners	Start Date	Due Date	Status	Updates (U)/ Changes (C)
A	Planning	Continue to apply for government funding for flood and water management schemes	Enabling activity by the Council	Luton Council – Flood Risk team	On-going	On-going	In progress	Funding applications in progress for Local Levy and DfE Suds in Schools
B	Planning	Emergency preparedness: In advance of extreme weather events, work with the Public Health	Policy Development	Luton Council – Public Health	On-going	On-going	In progress	Luton Council is represented at ICB Adaptation group regarding health care and is represented at BLMK sustainability group. Link

Appendix 1

	Headline Action	Action description	Action Type	Delivery Owners	Start Date	Due Date	Status	Updates (U)/ Changes (C)
		system to identify which social groups are most vulnerable and identify suitable interventions, based on recommendations from national climate change response plans						with Bedfordshire Local Resilience Forum (U)
C	Planning	Review and update the Local Plan to ensure policies to increase demands on developers that support resilience. Examples include development of sustainable urban drainage systems (SuDS) and meeting minimum targets for green space and tree cover through green roofs and tree planting.	Policy Development	Luton Council – Planning / Flood Risk	2024	2027	In progress	Current review of the Local plan is taking place (U)
D	Leadership project	Formally establish the River Lea Linear Park to make the river corridor more accessible as a walkway through the	Council led	Council – Flood Risk, Parks	On-going	On-going	In progress	River Lea Project Officer recruited in Oct 2024, initial review and stakeholder engagement started

Appendix 1

	Headline Action	Action description	Action Type	Delivery Owners	Start Date	Due Date	Status	Updates (U)/ Changes (C)
		town – involving links to river restoration						
E	Planting project	Increase take-up of existing allotment provision	Council led	Council – Parks	On-going	On-going	In progress	Updated Action from: Increase access to allotments and equivalent spaces for growing food. (C) Review of allotment take-up undertaken 2023//24. Work underway to relet vacant plots (U)
F	Planting project	Identify resources/budget to increase tree planting across the Borough taking account of "right tree, right place" to contribute to the Tree Strategy target to increase future tree canopy by 1 hectare by 2025 (with progress monitored)	Council led	Council – Parks	On-going	On-going	In progress	Updated Action from: Identify tree planting opportunities across the Borough to work towards increasing the tree cover by 1 hectare by 2025 (with progress monitored). (C) Luton Tree Strategy and Tree Management Strategy adopted by Executive April 2022. Coronation Landscape Heritage funding secured to create up to 10 x micro woods and orchards subject to consultation (U)
G	Planting project	Investigate opportunities to increase biodiversity and carbon capture in highway verges and	Partnership project	Council – Parks	On-going	On-going	In progress	Updated Action from: Increasing biodiversity and increase carbon capture in highway verges and grass land where appropriate, with related public

Appendix 1

	Headline Action	Action description	Action Type	Delivery Owners	Start Date	Due Date	Status	Updates (U)/ Changes (C)
		amenity grass land where appropriate						information provision about changes. (C) Pilot project in planning stages (Northwell/Bramingham) "Green Spine". No budget identified (U)
H	Community engagement	Work with the community to manage risks of flooding, through public awareness campaigns, building community's ability to prepare for and react to surface water flooding events. This builds on the lessons from the Luton and Dunstable Resilient and Adaptive Communities (RAC) project. For example schools projects to replace concrete surfaces	Council led, partnership delivery	Council – Flood Risk, Luton Lea Catchment Partnership	On-going	On-going	In progress	Suds in Schools completed in 2 projects – William Austin Primary and Warden Hill Junior Primary. William Austin project won national Suds Award. https://www.susdrain.org/SuDS Awards/SuDS Awards2024/SuDS Awards2024winners Luton is part of groundwater innovation – Project Groundwater https://www.projectgroundwater.co.uk/index.php Residents were contacted throughout 2024 to fill in questionnaires (U)
I	Planning	Develop a borough-wide assessment of climate vulnerability (a climate risk assessment), and use	Council led	Council – Flood Risk			Not started yet	

Appendix 1

	Headline Action	Action description	Action Type	Delivery Owners	Start Date	Due Date	Status	Updates (U)/ Changes (C)
		this as the basis for action planning for improved resilience						
J	Planning	Luton Council will actively seek to develop the Town Centre Masterplan to increase the amount of meaningful green space for community use.	Partnership project	Luton Council – Public Health, Planning Policy	2020	2023	Completed	<p>Town Centre Masterplan completed</p> <p>https://www.luton.gov.uk/Council_government_and_democracy/Lists/LutonDocuments/PDF/luton-town-centre-masterplan-report.pdf</p> <p>Town Centre Design SPD adopted - Link to council website</p>
		Link to the BLMK Integrated Care Strategy action to improve biodiversity and green estates where possible.	Partnership project	Luton Council – Public Health	On-going	On-going	In progress	<p>Ongoing work through Health Equity Town (Marmot) working subgroups on housing, public realm and net zero – this is linking with the Healthy Place Framework – and promotion of Health Streets approach; information sharing with relevant services.</p> <p>Also PH working with Housing on the Healthy Estates Programme (U).</p>

Appendix 1

	Headline Action	Action description	Action Type	Delivery Owners	Start Date	Due Date	Status	Updates (U)/ Changes (C)
K	Planting project	New Action: Protect existing tree canopy in line with the Tree Strategy target to work towards increasing the tree cover by 1 hectare by 2025 (with progress monitored) New requirement to consult about removal of street trees introduced November 2023 requires additional resource	Council led	Luton Council – Parks	On-going	On-going	In progress	Luton Tree Strategy and Tree Management Strategy adopted by Executive April 2022. New requirement to consult about removal of street trees introduced November 2023 currently un-resourced.
L	Funding	New Action: Investigate additional sources of funding to bring new areas of Conservation Grassland into appropriate management.	Council led	Luton Council – Parks	On-going	On-going	In progress	High priority sites including SSSI's currently include within a conservation grass cutting project. Additional funds required to enable appropriate management of CWS portfolio.

7. Council governance and operational systems

Appendix 1

	Headline Action	Action description	Action Type	Delivery Owners	Start Date	Due Date	Status	Updates (U)/ Changes (C)
A	Governance	Ensure that all new strategies include a clear statement about how the strategy will contribute to net zero	Policy Development	Luton Council – Councillors and Senior Officers	On-going	On-going	In progress	The Luton Net Zero Roadmap is the council's commitment towards reaching net zero by 2040. It sits under the core Vision 2040 for the Town, and is starting to become a key reference document in all published strategies and Plans (U) All executive reports require a 2040 vision reference. (U)
B	Governance	Set interim targets against which progress towards net zero can be monitored and define indicators for the monitoring of all emission reduction actions	Monitoring	Luton Council – Climate Change Team	On-going	On-going	In progress	Currently using the LGA Carbon calculator to define current scope emissions. The Council is committed to reducing its emissions by 9% year on year. Progress reported to Scrutiny quarterly. Review of data sources required.
C	Governance	Choose and implement a decision-support tool to ensure that all council decisions are scrutinized for their impact on carbon emissions (e.g. Cornwall decision wheel)	Council Decision making	Luton Council – Climate Change team	On-going	On-going	In progress	Currently the Council is using the IIA method of scrutinising impact on Council's decisions and operations. The IIA features an Environmental Impact Assessment which must be completed by all council leads and project managers (U).

Appendix 1

	Headline Action	Action description	Action Type	Delivery Owners	Start Date	Due Date	Status	Updates (U)/ Changes (C)
D	Governance	Establish a dedicated delivery board to oversee delivery of this action plan	Council decision making	Luton Council – Climate Change team/ 2040 partnership team	On-going	On-going	In progress	The Climate Change Advisory Board is a cross-party sub-committee responsible for overseeing the Council's commitment to becoming net zero (U). Inclusive Economy and Net Zero Board champions net zero across the borough.
E	Collaborative frameworks	Aim to influence the development of national policies to support the local net zero transition, through representation on groups of councils campaigning for change such as for example UK100 and/or LGA.	Partnership project	Luton Council – Climate Change team	On-going	On-going	In progress	Luton Council is a member of ADEPT and APSE – actively participates in working groups and events. Member of LGA / EoE Regional Climate Change Forum who are actively campaigning for change and support of climate change policy (U)
F	Collaborative frameworks	Establish collaboration partnerships with local public and private sector organisations to ensure sharing of best practice and economies of scale for similar activities. Linked to suggested Luton Climate Change Partnership (see	Partnership project	Luton Council – Climate Change team	On-going	On-going	In progress	Established partnerships with local and neighbouring Authorities, Public Health bodies such as BLMK Partnership, community-based organisations such as Groundwork. There is also close collaboration with our local schools and the University of Bedfordshire and University College London on educational research programmes (U).

Appendix 1

	Headline Action	Action description	Action Type	Delivery Owners	Start Date	Due Date	Status	Updates (U)/ Changes (C)
		buildings section) but potentially wider geographic scope to cover BLMK Health and Care Partnership.						
G	Collaborative frameworks	Promotion of carbon action across council departments e.g. through Climate Champions or Officers' Working Group	Council led project	Luton Council – The Climate Change team	On-going	On-going	In progress	The Climate Change Working Group was set up in 2021 (U). Review of the working group ongoing.
H	Carbon Literacy	Ensure that the LGA Councillors' workbook is highlighted to all Councillors	Council led	Luton Council – The Climate Change team	2020	2022	Completed	A copy of the handbook and training was delivered to all Councillors (U)
I	Carbon Literacy	Arrange carbon literacy training for all councillors, and ensure this is included in induction for new councillors going forward	Council led	Luton Council – The Climate Change team	On-going	On-going	In progress	All Councillors should be Carbon Literate by 2027 (U)
J	Carbon Literacy	Arrange carbon literacy training, made relevant to each function, for all council staff	Council led	Luton Council - the Climate Change team	On-going	On-going	In progress	CLT currently being delivered across the Council. 60+ officers and managers trained in 2024. The Council is working towards a Bronze Accreditation for CLT Businesses (U)

Appendix 1

	Headline Action	Action description	Action Type	Delivery Owners	Start Date	Due Date	Status	Updates (U)/ Changes (C)
K	Carbon Literacy	Organise, and find funding for, free carbon literacy training for community groups and in schools	Council led	Luton Council – the Climate Change team	On-going	On-going	In progress	<p>The Council has launched its CATCH scheme, an award-winning educational support initiative helping to train and support teachers.</p> <p>Currently delivering community training and developing a Citizen's toolkit for community groups to compliment the Climate Guide available to all residents (U)</p>
L	Citizen engagement	Build on initial citizen engagement around this action plan to develop and maintain a citizens' panel to co-design and monitor action on carbon emissions and climate resilience	Council led	Luton Council – Climate Change team and Social Justice team	On-going	On-going	In progress	Working with the Fairness Taskforce programme to deliver on community-based actions and support. So far communities have been supported with a Residents Guide and carbon literacy training for community champions. (U)
M	Citizen engagement	Develop a Local Area Energy Plan to enable households and businesses to better understand the decarbonisation options appropriate for them	Council led	Luton Council – Climate Change team			Not started yet	

Appendix 1

	Headline Action	Action description	Action Type	Delivery Owners	Start Date	Due Date	Status	Updates (U)/ Changes (C)
N	Citizen engagement	Encourage schools to sign up to the Ashden 'Let's Go Zero 2030' campaign	Council led	Luton Council – Climate Change team	On-going	On-going	In progress	Working with local schools delivering the award-winning CATCH programme. So far over 30 local schools have signed up to the programme, which offers help and support for school's to develop their climate action plans and access specialist services and knowledge to help them achieve their goals. Actively collaborating with Let's Go Zero 2030 campaign. (U)
O	Procurement	Ensure that the social value framework used by the council addresses climate change	Council led	Luton Council – Procurement team, Business Support team	On-going	On-going	In progress	Delivering on social value commitments. Working with local anchors to develop Luton specific sustainability objectives. Establishing partnership delivery around The Social Value Portal model (U)
P	Procurement	Ensure all major procurement is scrutinized using the council's decision support tool (see 'governance')	Council led	Luton Council – Procurement team	On-going	On-going	In progress	Currently the Climate Change and Procurement team is developing a new set of environmental questions that can be used on larger contracts (U)
R	Procurement	Council to act as leader in ensuring that climate change impact is	Policy development	Luton Council –	On-going	On-going	In progress	Promotion of presentations at Meet the Buyer's forums and engagement events, where

Appendix 1

	Headline Action	Action description	Action Type	Delivery Owners	Start Date	Due Date	Status	Updates (U)/ Changes (C)
		considered as part of procurement decisions, and influence large local businesses to follow this example.		Procurement team				contractor's and suppliers are encouraged to understand the Council's commitment to net zero (U)
S	Procurement	Develop a detailed plan to transition all council procurement to net zero requirements <ul style="list-style-type: none"> All suppliers to be required to have in place plans to transition to net zero All services delivered to the council to be net zero Where applicable, goods purchased to be net zero in-use (e.g. fleet vehicles, heating and cooling systems) 	Policy Development	Luton Council – Procurement team	N/A	N/A	No started yet	Difficult to develop a detailed action plan, when options available to our supply chain is either unknown or under-developed, potentially impacting on costing or delivery (U)
T	Investment	Assess the impact of the council resolution calling for the development and adoption of responsible investment policies by	Policy Development	Luton Council – the Climate Change team	2021	-	Completed	The Council passed a motion in Nov 2021 calling for its pension fund to disinvest its holdings of almost £40m in fossil fuel firms. The Beds Pension Fund decided <i>“not to stop all investment in businesses associated with fossil</i>

Appendix 1

	Headline Action	Action description	Action Type	Delivery Owners	Start Date	Due Date	Status	Updates (U)/ Changes (C)
		the Bedfordshire Pension Fund.						<i>fuels because there is strong evidence that investors, as active shareholders, can have greater influence on the transition to a low-carbon economy."</i>
U	Finance	Develop plans for projects that will implement the action plan, so that when funding streams become available, it is possible to apply for them within short timeframes. These plans should include identification of delivery partners, to help the council spend funding allocations within timeframes that are sometimes very short.	Council led	Luton Council – the Climate Change team	2023	On-going	In progress	<p>The CATCH programme helps schools develop detailed sustainability plans to access funding, either short or long-term (U)</p> <p>Strategic energy and carbon manager JD had been reviewed. Recruitment about to commence. (U)</p>
V	Finance	Review of capital strategy to ensure that investment is prioritised to achieve net-zero and all investment mitigates negative environmental impacts	Council led	Luton Council – Finance team	On-going	On-going	In progress	Capital Strategy objectives are aligned to the Council's Strategic Objectives including Becoming a greener and more sustainable town, to meet our long-term ambition to be carbon net zero and climate resilient by 2040. The Council's principles for capital

Appendix 1

	Headline Action	Action description	Action Type	Delivery Owners	Start Date	Due Date	Status	Updates (U)/ Changes (C)
								investment include achieving the council's net-zero emissions target. Requests for funding are required to outline any positive or negative impacts the project would have on achieving net-zero carbon emissions by 2040 (U)
W	Finance	Include ESG reporting in Council reporting to move social value and environmental impacts up the agenda	Policy development	Luton Council – Climate Change team	On-going	On-going	In progress	The Council decision making toolkit has an environmental impact assessment, which encourages authors or project leads to promote and highlight ESG impacts (U)

Luton Net Zero Roadmap and Action Plan

Thank you for reading

Visit www.luton.gov.uk/netzero
to find out more



Luton 2040
A place to thrive